



# Weatherwell

Exterior Shutter Range 

# Weatherwell

Exterior Shutter Range



A product of





# TABLE OF CONTENTS

INSTALLATIONS	4
BLADE SIZES	7
BLADE PROFILE	11
Z FRAMES	12
L FRAMES	13
CONTROL RODS	14
STILES	15
SHAPES	16
OPTIONS	17



Explore more options  
and details online.



# INSTALLATIONS

## **HINGED**

Available for Weatherwell Standard



## **FIXED IN CHANNEL**

Available for Weatherwell Standard, Fixed Louvre & Cyclone Rated



**MULTI-FOLD**

Available for Weatherwell Standard



**SLIDING**

Available for Weatherwell Standard, Fixed Louvre & Cyclone Rated



**SLIDING PAIR BI-FOLD**

Available for Weatherwell Cyclone Rated



**STACK BAY**

Available for Weatherwell Cyclone Rated



## BLADE SIZES

**64mm - Closed**  
Available for Weatherwell Standard

**64mm - Opened**



**89mm - Closed**

Available for Weatherwell Standard

An 85mm blade is available for Weatherwell Cyclone Rated.



**89mm - Opened**





**114mm - Closed**  
Available for Weatherwell Standard



**114mm - Opened**



**Fixed Blades**

Available for Weatherwell Fixed Louvre

Size: 64mm angled at 40 degrees, 89mm angled at 27 degrees, 114mm angled at 20 degrees





# BLADE PROFILE

## **ELLIPTICAL**

Available for Weatherwell Standard, Fixed Louvre & Cyclone Rated

Size: 64mm, 85mm, 89mm, 114mm

The 85mm blade is only available for Weatherwell Cyclone Rated.



# Z FRAMES

## **Z STANDARD**

Available for Weatherwell Standard

Code A4207

## **FLUSH MOUNT Z**

Available for Weatherwell Standard

Code A4208



# L FRAMES

## BEADED L

Available for Weatherwell Standard

Code A4205

L FRAMES 13





# CONTROL RODS

## **CLEARVIEW**

Available for Weatherwell Standard

The 114mm blade comes standard with dual clearview control rods.

## **CONTROL ROD**

Available for Weatherwell Cyclone Rated



# STILES

## **FLAT**

Available for Weatherwell Fixed Louvre & Cyclone Rated

Size: 2.8mm, 30mm, 50mm

The 50mm stile is only available for Weatherwell Cyclone Rated.

## **BEADED**

Available for Weatherwell Standard

Size: 60mm



Pictured: Weatherwell Fixed Louvre

# SHAPES

## **SLOPE LEFT & SLOPE RIGHT**

Available for Weatherwell Standard & Fixed Louvre

A Weatherwell Standard shaped shutter will have operable blades on the non-sloped area, and fixed blades on the sloped section.





# OPTIONS

## **BLADE STAY**

Available for Weatherwell Standard



## **FLUSH BOLT**

Available for Weatherwell Standard



**SECURITY BOLT**  
Available for Weatherwell Standard



**DOUBLE SHOOT BOLT**  
Available for Weatherwell Standard



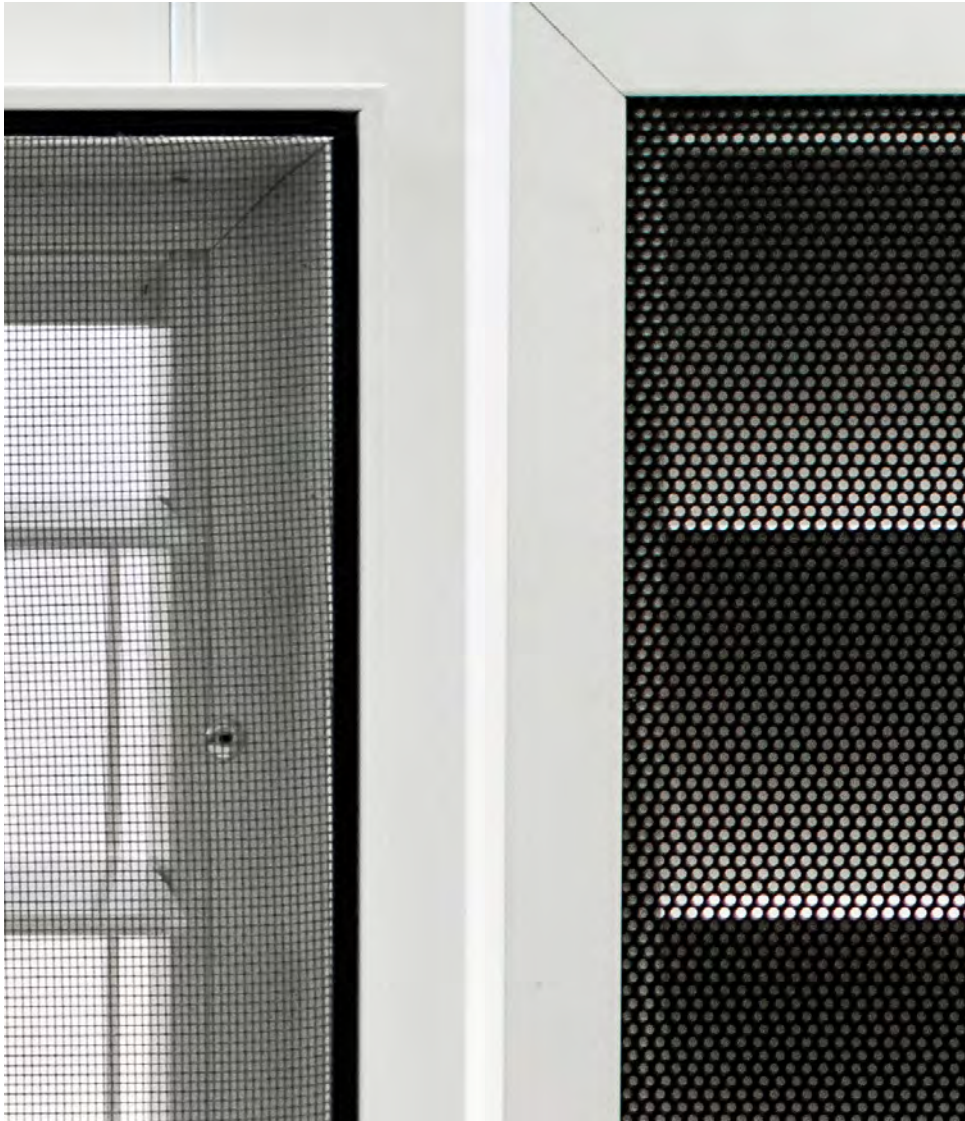
**LOCKABLE HANDLE**

Available for Weatherwell Standard



**STAND OUT BRACKET**

Available for Weatherwell Standard & Fixed Louvre



Fibreglass mesh

Aluminium mesh

### FLY SCREEN UNIT

Available for Weatherwell Standard & Fixed Louvre



A product of

